

RENO Option for Insight

Description



The RENO, Remote Notification Option for Insight® allows enunciation of Insight Alarm, Status, and System Event information to various notification devices such as alphanumeric pagers, numeric pagers, e-mail, and phones via voice or SMS (Short Message Service). RENO enables mobility for facility operators to receive their building automation system alarms without restricting them to dedicated Insight workstations.

Features of the RENO Option are:

- Notification of both native APOGEE and integrated system points such as Fire and Life Safety
- Notification for both Standard and Enhanced Alarming points
- Notification for point status (e.g., Failed)
- Message Optimization
- Notification Device Scheduling
- Group Notification
- Escalation Lists
- Manual Notification on-the-fly
- Heartbeat
- Support for any TAP-compliant (Telelocator Alphanumeric Protocol) paging Service Providers
- Direct Serial Connection to TAP-compliant Paging Systems

RENO – Remote Notification

- Requires Insight 3.6 or later
- Uses existing Insight alarming information
- Requires at least one dedicated analog phone line and modem for notification dial-out (for numeric and alphanumeric paging, and SMS)

- Runs as a Windows Service, so RENO operates regardless if an operator is logged-on to the Insight workstation
- Optional feature to stop or enunciate notification via phone call requires an additional phone line, Dialogic Telephony card and text-to-speech software.

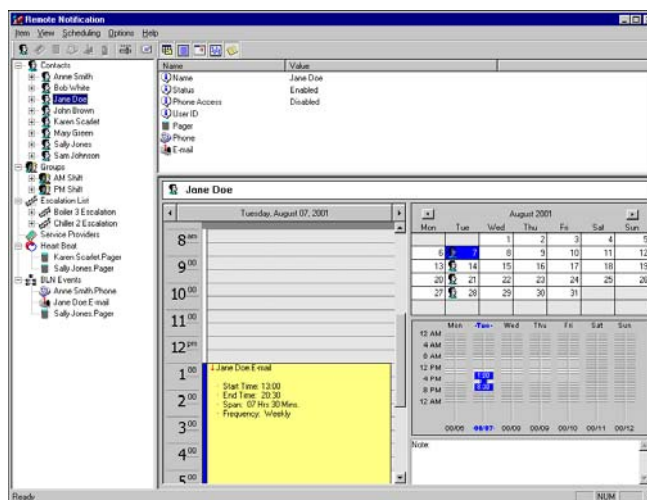


Figure 1. RENO Main Screen.

Notification Messages

RENO allows you to configure the level of detail, from concise to verbose, in the alarm messages sent to each contact person. For example, a small numerical message is defined for a simple numeric pager, while a more detailed message with point name, alarm status, value, time of alarm, and enhanced alarm message are sent to another contact's e-mail. A user-defined delay can wait a period of time after the point goes into alarm before the notification is sent to the remote device. RENO also lets users manually send instant messages to devices, independent of alarm activity and regardless of a device's scheduled availability.

Notification Devices

RENO can transmit messages to various notification devices, including numeric pagers, alphanumeric pagers, e-mail accounts, and phones (mobile or landline) via email, SMS or voice using text-to-speech technology. In addition, a variety of devices can be associated with each contact.

Notification Device Scheduling

Each contact may have several devices available for remote notification, such as pagers, e-mail, and phones. Each of these devices may be assigned different availability schedules for notification, matching an operator's availability schedule. This allows contacts to be extremely mobile, by notifying the selected devices during set hours of the day.

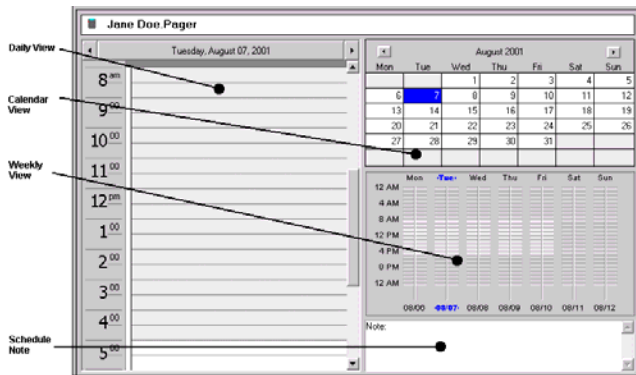


Figure 2. Define a schedule for each device.

Group Notification

For ease of setup and notification, a collection of devices can be combined into a group. RENO will then notify all members within a group of selected notification messages.

Escalation Lists

Devices and groups can be combined as stages in an escalation list. With an escalation list, a notification message is sent to each stage one at a time, after a user-defined delay for each stage. RENO escalates to notify subsequent stages in the list if the current stage does not respond within the defined delay. Escalation can be stopped by a manual operator command, upon acknowledgement of the alarm, upon the point returning to normal, or an optional call-in feature to stop escalation via a phone.

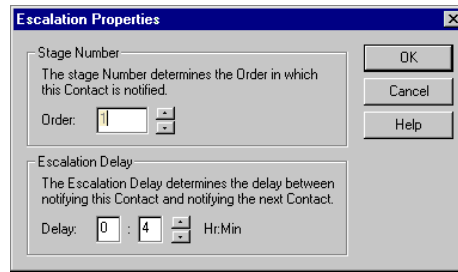


Figure 3. Escalation Properties.

Heartbeat

The Heartbeat feature periodically notifies a selectable contact or group that RENO is functioning properly.

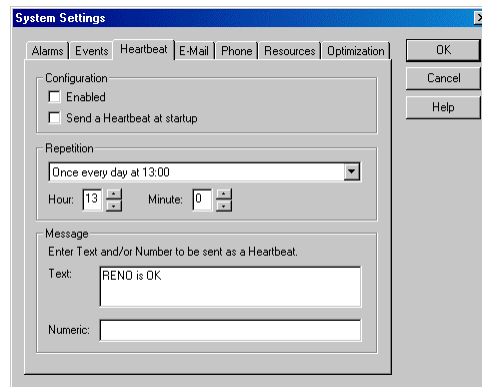


Figure 4. Heartbeat configuration.

Paging Service Providers

RENO allows operators to define local TAP-compliant alphanumeric paging and SMS service providers (Telelocator Alphanumeric Protocol).

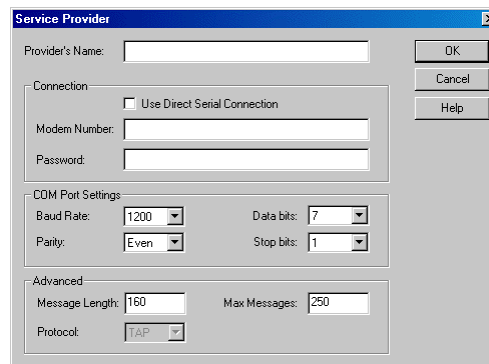


Figure 5. Service Provider definition.

Optimization

Configure devices to combine alarm and system event messages, minimizing notifications received by devices.

Specifications

Insight	Requires Revision 3.6 or higher
Remote Devices	RENO supports notification to: <ul style="list-style-type: none">• Alphanumeric Pagers• Numeric Pagers• E-Mail (SMTP)• Phones (Email, SMS, Voice Notification)
Alphanumeric Paging Service Providers SMS Service Providers Paging Systems	Must be TAP-Compliant (Telelocator Alphanumeric Protocol)
Phone/Voice Notification & Call-in	<ul style="list-style-type: none">• Dialogic Board Model# D/4PCI-U (outside purchase, sold separately)• Text-to-Speech software
Modem for notification dial-out (for numeric and alphanumeric paging and SMS)	Outside purchase, sold separately.

Ordering Information

Description	Part Number
RENO Option for Insight	571-181
Text-to-Speech Software – 1 port license	571-186

Information in this document is based on specifications believed correct at the time of the publication. The right is reserved to make changes as design improvements are introduced. APOGEE and Insight are registered trademarks of Siemens Building Technologies, Inc. ©2004 Siemens Building Technologies, Inc.